



Conference

Supporting Natural Climate Protection in Agricultural Landscapes

Dr. Sylvie Rockel, managing director Landcare Europe

24 February 2026

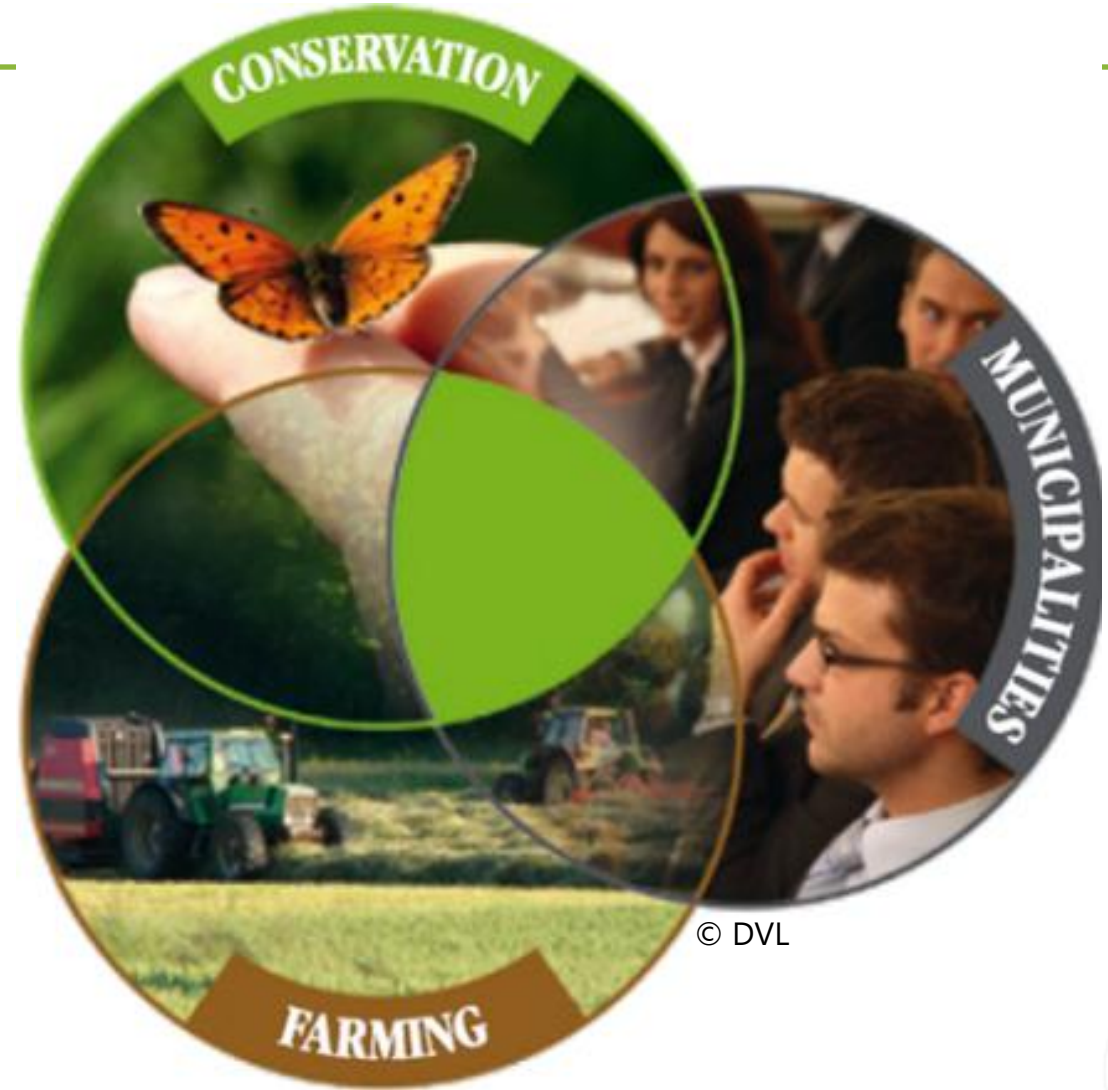
Supported by:



on the basis of a decision
by the German Bundestag

How do Landcare(-like) Associations (LCA) work?

- Cooperatively
- Voluntarily
- Regionally
- Interdisciplinary
- Independently





EUKI project

Landcare Europe Captures Carbon - Supporting Natural Climate Protection in Agricultural Landscapes

Corinna Friedrich, project leader, Landcare Germany (DVL)

Supported by:



on the basis of a decision
by the German Bundestag

LANDCARE EUROPE Captures Carbon

Our main goal is ...

to **improve knowledge** on the political and practical implementation of natural carbon sinks in agricultural landscapes, for

- farmers
- multipliers
- policy-makers



© Landcare Europe



© Friedrich



Farmers as key stakeholders



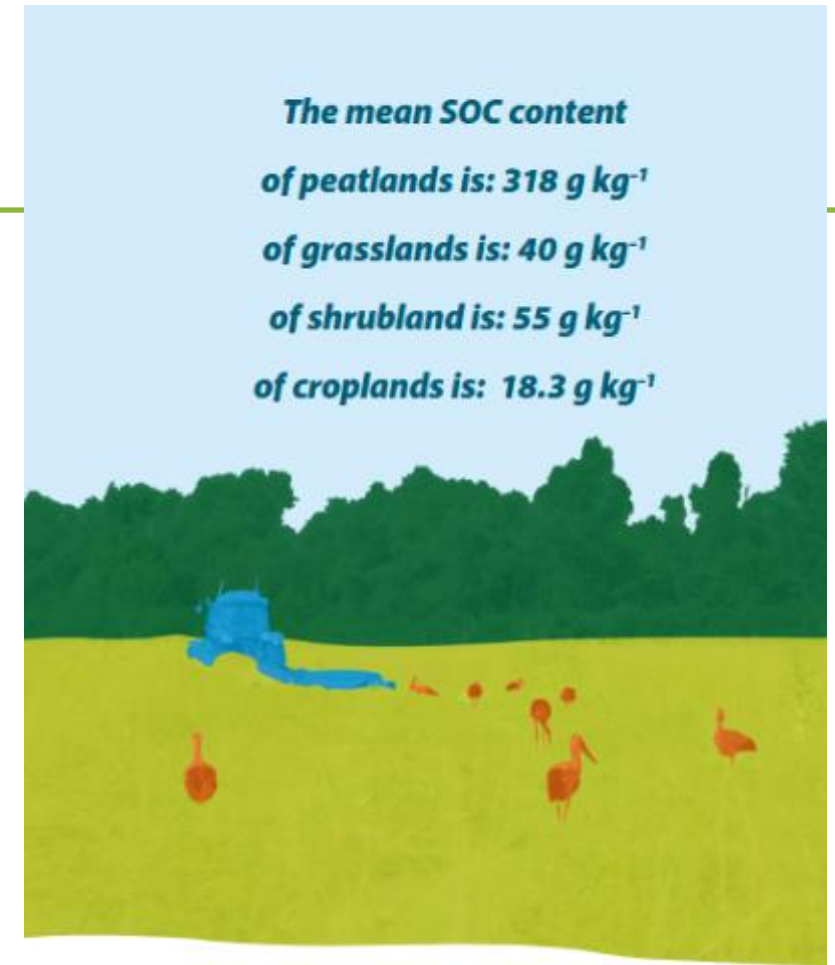
12% of total EU27-emissions from Agriculture (1) → Farmers are key stakeholders in mitigating climate change



the way in which agricultural land is used influences its capacity for carbon storage

References:

(1) European Environment Agency (EEA) (2025): Annual European Union greenhouse gas inventory 1990–2023 and inventory report 2025. Copenhagen



Arias-Navarro C., Baritz R., Jones A. (Eds) 2024: The state of soils in Europe. Fully evidenced, spatially organised assessment of the pressures driving soil degradation. Publications Office of the EU.

Grafic: DVL 2026

Importance of the CAP



- The EU Common Agricultural Policy (CAP) regulations have a strong impact on farming practices in Europe and the carbon balances in our agricultural landscapes.



- Study of the EUKI project "**Common Agricultural Policy Contributions to Climate Protection in the EU**" (1) shows the highest saving potentials (-15% to -21%) by adapting GAEC standards & Eco-Schemes:

1. the **reduction of nitrogen inputs**
2. the **land commitment of livestock**, in particular grassland commitment for ruminants
3. the **management of organic soils** used for agricultural purposes
4. the expansion of uncultivated land and **agroforestry systems**.

(1) "Improving the contribution of the Common Agricultural Policy to climate change mitigation" - Germanwatch - Quantification of greenhouse gas emission reduction potentials of the CAP; conditionality (GAEC standards) for direct payments and possible eco-schemes, 2020

„CAP post 2027: Where are we in the process?“

MARIA NOICHL MEP

LANDCARE EUROPE



LANDCARE EUROPE e.V.

- 🌱 Founded: 7 June 2023, Brussels
- 🌱 9 founding members



<https://www.landcare-europe.org/>



LANDCARE EUROPE e.V.

Goal: Expand to all
27 EU Member
States

JOIN US

📍 Network of 11 members (Feb. 2026)

Sonairte

DVL Deutscher Verband für
Landschaftspflege



BOERENNATUUR

BOEREN
NATUUR
VLAANDEREN



Conservatoires
d'espaces
naturels

SICONA
Naturschutzsyndikat

LEGAMBIENTE
LOMBARDIA

Brodsko
ekološko
društvo
BED

📍 + 2 friends (Feb. 2026)



- European networks
- For profits
- Universities
- Individuals



LE pilot project partners
Collaborations
EU
Non-EU

LANDCARE EUROPE – Objectives



- 1. Contributing to EU targets** EU Biodiversity Strategy & EU Green Deal
- 2. Elaborating policy recommendations**, e.g. for CAP
- 3. Supporting the foundation** of new Landcare Associations (LCAs) and umbrella organisations in all 27 EU MS
- 4. Fostering knowledge exchange** among LCAs by organising workshops, trainings, field visits, project collaboration.



Next Project: Water~Farmers

- Titel: "Water~Farmers: Advanced training for sustainable water and soil management on farms"
- **Goal:** To develop, test and transfer a learner-centred, flexible and innovative training program on sustainable water and soil management for EU farmers & agroecology consultants



© Friedrich



Co-funded by
the European Union



Ressources

Manual: [Key success factors for creating natural carbon sinks with farmers](#)

Focus papers:

[Extensively managed grasslands as natural carbon sinks](#)

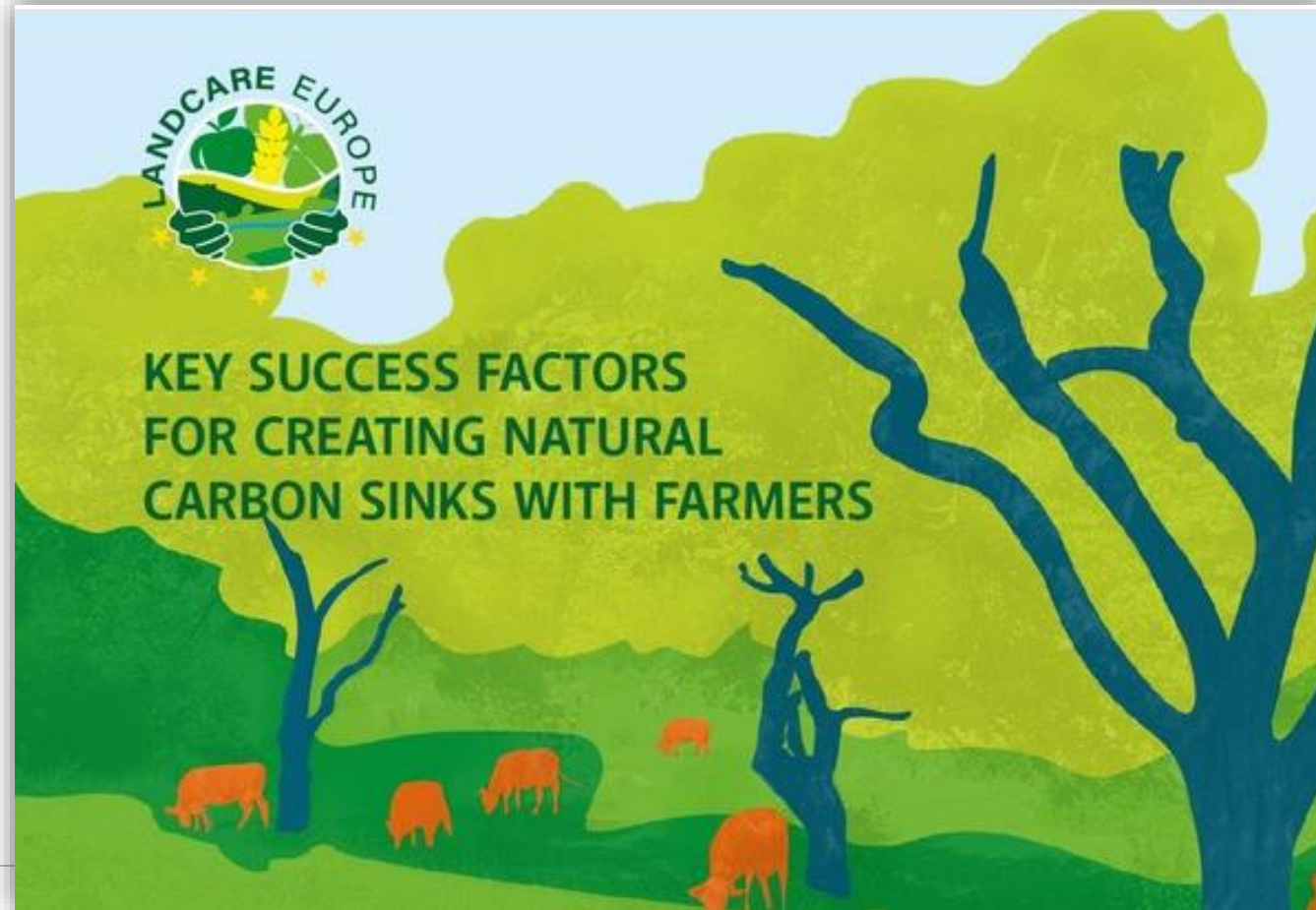
[Healthy soils as natural carbon sinks](#)

[Agroforestry systems as natural carbon sinks](#)

[Peatlands as natural carbon sinks](#)

[Workshops](#)

[Best practice profiles](#)



Videos

Lithuania

Year-round adaptive rotational grazing for carbon sequestration



Romania

Water retention, permaculture and regenerative farming in the Harghita mountains



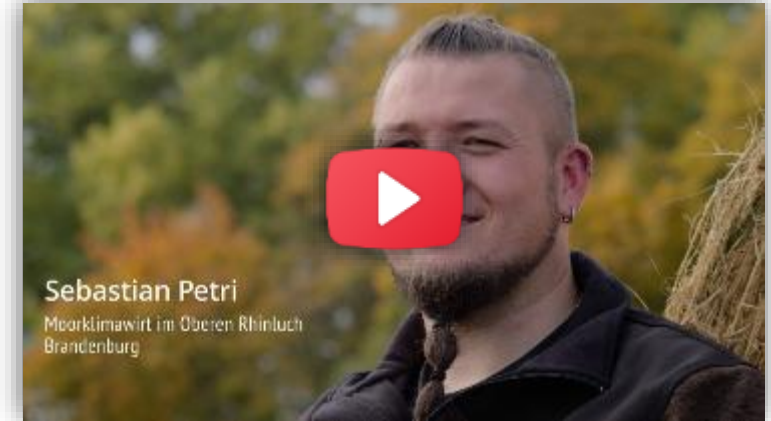
Best practice video

Landcare Europe Captures Carbon – Creating Natural Carbon Sinks with Farmers



Germany

Peatland farming as carbon sequestration method



Croatia

Gajna – Collective approach of grazing native livestock in floodplains



Czech Republic

Building healthy soils to sequester carbon and improve biodiversity



Thank you for your attention!

Contact:

Corinna Friedrich

Team leader „Water & Soil“

Deutscher Verband für Landschaftspflege (DVL) e.V.

Promenade 9

91522 Ansbach

E-mail: c.friedrich@dvl.org

Tel. 0981- 1800 9911



Dr. Sylvie Rockel

Landcare Europe e.V. Managing Director

EUKI project manager „Landcare Europe Captures Carbon“

LANDCARE EUROPE e.V.

Promenade 9 | D-91522 Ansbach

Phone: +49 981 1800 99 36

info@landcare-europe.org

s.rockel@dvl.org

